



## **OPERATING AND INSTALLATION MANUAL**

## CONGRATULATIONS!

Wir Congratulations on buying this **profivac central vacuuming system**.

You have made an outstanding choice in deciding to equip your home with a multifunctional «Made in Steinen/Schwyz/Switzerland» central vacuuming system.

Hygienic cleanliness, simple operation and quiet-as-a-whisper operation are the compelling arguments in favour of this **profivac** device.

An ultra-modern factory in the heart of Switzerland, carefully selected and high-grade materials, tested quality and the technical know-how of our employees are the basis of a 5-year guarantee offered following the original purchase.

This operating and installation manual contains all the information you need to be able to operate the **profivac** central vacuuming system properly and with maximum effectiveness. Enjoy your new «**Vacuum monster**».

### REMARK

*This device can be used by **children of 8 years** and up as well people with reduced physical, sensory and mental capability or a low levels of experience and knowledge, if they are supervised or have been instructed in the safe use of the device and the dangers arising from it. **Children** must not play with the device. Cleaning and **user maintenance** should only be performed by **children** under supervision.*

## TABLE OF CONTENTS

<b>SAFETY INSTRUCTIONS</b>	3
<b>INSTALLATION INSTRUCTIONS</b>	4
<b>INSTALLATION</b>	
<b>CENTRAL VACUUM CLEANER</b>	
Dimensions for central vacuum cleaner	4
Wall bracket	5
Exhaust air	6
Pipe line connection,	6
Control line and exhaust air	
<b>START-UP</b>	7
Pressure test and function	8
Switching on/off	9
<b>CARE AND MAINTENANCE</b>	10
IntelligentSystem	10
Changing dustbag	12
Cleaning filter	14
Cleaning carbon dust filter	15
Changing battery	16
Problem / Remedy	18
<b>GUARANTEE</b>	17

## SAFETY INSTRUCTIONS

Read the entire operating manual through carefully and follow the instructions and tips. Retain this manual so that you will be able to find out (later) about the usage instructions at any time. The manual can be downloaded from our website [www.zentralstaubsauger.ch](http://www.zentralstaubsauger.ch) vacuum cleaner.

The central vacuuming system is intended for private rather than commercial use.

The **profivac** central vacuuming system can be installed in the garage, in the cellar and in storerooms. Dry and ventilated rooms are required.

The central vacuum cleaner is designed for a voltage of 230 Volt/50 Hz. The electrical circuit must be protected with a 16-amp fuse. Ensure the device is only operated at the voltage indicated on the manufacturer's plate. Always pull out the plug before you perform care or maintenance work on the central vacuum cleaner. Never work on electrical devices with wet hands. The floor must always be dry.

The electrical motors we use are air-cooled. As the cold air will be sucked up to the lid, the lid must always be kept clear. The motors heat up during operation, so do not vacuum any combustible or inflammable materials. This type of material can trigger explosions. Under no circumstances vacuum burning or red-hot materials, as they may perforate the filter. You should also avoid vacuuming cement dust as it blocks up every filter.

Always use the **profivac** central vacuum cleaner with the filter. Otherwise the motors will be damaged.

The dirt container must be emptied regularly.

The enclosed dustbags can be used for transporting the dirt to the rubbish bin in a dust-free way. However, the device can also be operated

without a dustbag. Dustbags should be kept away from children, due to the danger of asphyxiation!

The filter insert must be regularly checked for dirt, which can be washed away with cold water. It can be useful to buy a second filter so that you can immediately vacuum the dirty filter. (Art. No. 99999106).

Keep the suction nozzles away from the face, the ears or unprotected body parts during use, as you may injure yourself.

*If the network cable is faulty, the manufacturer or a similarly qualified technician must replace the cable.*

*The **profivac** central vacuum cleaner is not intended to be used by persons (**including children**) with limited physical or mental capabilities or lack of experience or training!*

## INSTALLATION INSTRUCTIONS FOR CENTRAL VACUUM CLEANER

The **profivac** central vacuum cleaner must be installed in a dry, ventilated room. You need a 230 Volt socket close to the device (approx. 1 metre).

For the pipe-installation on the vacuum side, keep our installation manual to hand.

It is essential that you take note of the following dimensions for the central vacuum cleaner's exhaust line:

Exhaust line length up to 2m:  
Take our pipe Ø 50mm (124701)

Exhaust line from 2m to 8m in length:  
Pipe Ø 80mm (100301)

Exhaust line up to 10m:  
Use pipe Ø 100mm (100302)

Generally, however, it is best to avoid an exhaust line of over 2m and an alternative location for your central cleaning unit should be considered.

For optimal suction power the use of 50 HT pipes is not recommended.  
An adequate seal cannot be guaranteed with these. However, overlong exhaust lines are an exception.

### CENTRAL VACUUM CLEANER POSITIONING

We recommend fitting the central vacuum cleaner in a storeroom, in the garage, in the cellar or in a technical room, in each case in a suitably and adequately ventilated area. The machine noises and the heat radiation of the turbines should be taken into account.

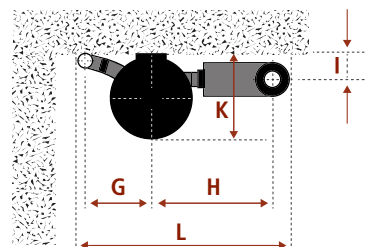
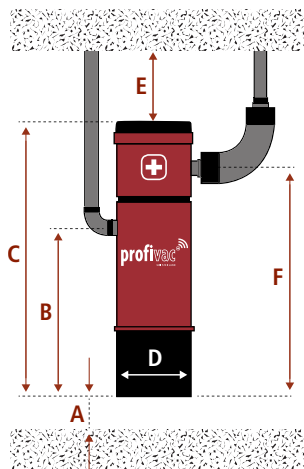
The central vacuum cleaner should preferably be fitted at the lowest point of the suction system, so that even the heaviest suction material can be sucked through the pipes into the dust container without problems.

### CENTRAL VACUUM CLEANER DIMENSIONS

All accessories required for proper installation are enclosed in the dirt container at the factory. Open the fasteners and remove the parts required.

#### profivac 300/360    profivac 430

A	mind. 10 cm	mind. 10 cm
B	67 cm	70 cm
C	103 cm	111 cm
D	31 cm	38 cm
E	mind. 25 cm	mind. 25 cm
F	83 cm	93 cm
G	23 cm	25 cm
H	38 cm	40 cm
I	10 cm	10 cm
K	32 cm	40 cm
L	66 cm	70 cm



## WALL BRACKET



1. Align the wall bracket on the wall at the optimal height (approx. 1.60 m) and mark the drill holes on the wall.



2. Using a 6 mm masonry drill, drill the five holes deep enough that the pins can be sunk fully into the wall.



3. All required screws and pins can be found in the installation set.



4. The **profivac** central vacuum cleaner is suspended on the wall bracket with the two brackets at the rear.

## INSTALLATION CENTRAL VACUUM CLEANER



The exhaust is **on the right** of the device.

For the pipe installation on the exhaust side please note: the special exhaust muffler is flexible, allowing it to be optimally adjusted to the structural circumstances of the exhaust line. The sound muffler is connected directly to the air vents on the central vacuum cleaner with a hose clamp. Then the exhaust pipe is fastened to the sound muffler with a second hose clamp.

Special sound muffler (170210)  
(included in delivery package)

Non-flammable as per DIN 4102 KI. A2  
Adjustable 0 - 90°

### PIPE, CONTROL LINE AND EXHAUST CONNECTION

#### Pipeline:



The suction port is on the bottom left of the central vacuum cleaner. Push the rubber sleeve and the other two hose clamps above the port.

Now pull the sleeve over the suction line. Using the hose clamps, secure the sleeve once above the port and once above the suction line.

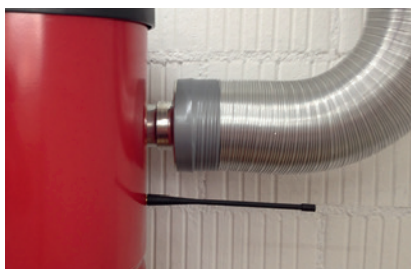


### INSTALLATION INSTRUCTIONS FOR CENTRAL VACUUM CLEANER

#### Control line:

With the **profivac**-wireless you can either do without the control line cable or connect the 24 Volt control line of the suction line with the strip connector of the 24 Volt control line of the central vacuum cleaner.

#### ROD ANTENNA



The rod antenna for WIRELESS use, which can be found in the dirt tank, should be screwed in on the right of the device.

## START-UP

Important: With the **profivac** wireless hose, the handle first has to be read in! To do this, proceed as follows:



Disconnect the central vacuum cleaner from the power socket and then re-connect. You now have five minutes to register the hose.



Press the **On/Off switch** on the handle at the same time as the **PowerControl button** and press the two buttons at the same time until the device switches on again.

### Vacuum shovel / Wuusch / Crumb-swallower-Wireless drawer.

Important: With the **profivac** kitchen wireless-connection, the transmitter first has to be read in!



These three kitchen helpers are read in as follows:

Pull out the plug then put it in again. You now have five minutes to register the kitchen helpers. Switch the kitchen helper on and off three times within ten seconds. The kitchen transmitter is now registered. The next time it is switched on the central vacuum cleaner starts to vacuum.



## PRESSURE TEST AND FUNCTION

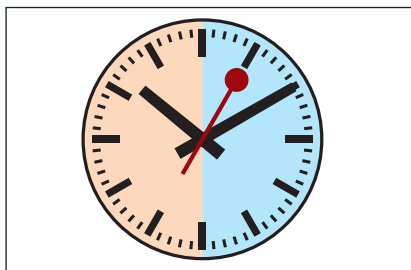
After the installation is finished the entire system must be tested. First there will be a check to see that the entire pipe installation is airtight.



Connect all suction nozzles.



Start the central vacuuming system with the button on the device.



If the system is airtight, the device will switch off automatically after 30 seconds.

If the system does not switch off automatically, check again that the entire piping is airtight or inform customer service, so that the central system can be calibrated again.

### Wireless doesn't react to your command?

It sometimes happens that the wireless does not react to your command when you press. Take two or three steps back (ideally to the staircase) and the wireless will follow your commands.

## SWITCHING ON / OFF

### 1st Step



Insert the tube into the suction socket.

### Switching on: System with remote start hose ON-OFF (PowerControl / Intelligent-System)



Switch the central vacuum cleaner on using the manual ON-OFF switch.

### Switching on: System with PowerControl or IntelligentSystem



Insert the tube into the suction socket. Switch the central vacuum cleaner on using the manual ON-OFF switch. The **profivac** device now runs with 100% suction power. You can now adjust the suction power as required using the PowerControl button.



After switching off the suction device on the handle, the connecting pieces of the suction hose can be removed from the suction nozzle.

## CARE AND MAINTENANCE

**Important: Always pull out the plug before care and maintenance work!**

Please use only a damp cloth to clean the central vacuum cleaner.

The central vacuum cleaner is fitted with long-life electrical motors. All bearings have permanent lubrication. The carbon brushes have a lifespan of approx. 600 operating hours. From experience, therefore, your **profivac** central vacuum cleaner will run from 6 to 10 years. After the carbon brushes are replaced by authorised specialist staff, the central vacuum cleaner can be started again without problems.

### IntelligentSystem

#### A) Yellow display: Dirt container symbol

The dirt container must be emptied. Please follow the guide on page 12. Once the dirt container has been emptied and a new dustbag inserted, press the reset button on the device for at least five seconds. The display on your hand tube curve will go out.

#### B) Orange display: Filter symbol

Change or wash both filters: **the lamella filter and the carbon dust filter.** These two filters are dirty and should be cleaned with water or you have to replace these two filters. Follow the guide on pages 14 and 15. If you have cleaned these **two filters** and they are completely dry, insert the filters again. Then press the Reset button on the device for **at least five seconds.** The display on your hand tube curve will go out.

#### C) Red display: maintenance symbol

Maintenance work is to be carried out on your device by a service technician or there is an operating fault. Please inform a service employee.

#### All symbols flashing (A, B and C)

The batteries will soon be used up. Please change the batteries (see page 16).

### IntelligentSystem and PowerControl suction power levels

You can set the desired suction power on the handle of the **profivac** PowerControl and **profivac** IntelligentSystem hose using the PowerControl button. You can select between 30 per cent, 60 per cent and 100 per cent suction power. You can see the suction power levels setting in the following image.



Suction power 100 Per cent

Suction power 60 Per cent

Suction power 30 Per cent

After switching off at less than 100 per cent, the central vacuum cleaner runs automatically for four seconds at 100 per cent power to remove the remaining dirt from the pipe system and the suction hose.



## CHANGING DUSTBAG

Your central vacuum cleaner's dirt container is fitted with a dustbag in the factory. All of the accumulating dirt is collected in this bag, which must be disposed of at regular intervals.

**Important: Pull out plug!**



1. The dirt container is held by two fasteners. Open the fasteners upwards. The dirt container is now hanging in the fasteners.

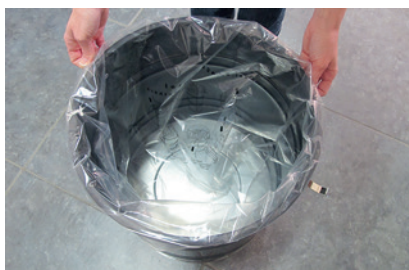


2. There is a 2-centimetre gap between the container and the housing. Pull slowly on the bag's strings. This closes the dustbag.



3. You can unhook the dirt container and remove the dustbag without being bothered by dust.

4. Dispose of the refuse bag in your household rubbish.



5. Place a new dustbag in the dirt container. Pull the dustbag fastener far enough over the edge of the dirt container so that the dustbag protrudes 2 centimetres over. The pull string should point straight forward. Pull carefully on the strings till the external edge of the dustbag is tight against the dirt container.

## CHANGING DUSTBAG



6. Cardboard is enclosed with every dustbag. Place the cardboard in the dustbag as shown in the image. Ensure the dustbag is tight against the dirt container wall.



7. Hang the fasteners back in the fastening loops on the left and right.



8. Slowly fold down the fasteners together. The dirt container will be clamped tight against the housing. Ensure the seal is perfect.



9. The central vacuum cleaner is closed and can be started up.



10. Insert the plug again. The Reset button on your **profivac IntelligentSystem** device must then be pressed for at least five seconds to clear the maintenance displays. Your device is now ready for operation again.

## CLEANING FILTER

In your central vacuum cleaner a highly effective lamella filter with a filter area of 1.30m<sup>2</sup> guarantees absolutely clean exhaust air. In the course of time, a layer of dust may form on the surface of the filter. In this case the filter must be cleaned.

The lamella filter can be washed manually by hand with cold water. Now please place the fully dried filter in the central vacuum cleaner. Damp filters quickly stop up.

Important: Pull out plug!



1. Remove the dirt container as described in «Changing dustbag» (page 12).



2. Loosen the screws and pull the filter out of the filter holder.



3. Rinse the filter under the tap.

4. Place the filter in a well-aired location to dry.



5. Re-insert the filter once it has been fully air-dried. Push the filter over the filter holder and tighten the screws.



6. Fit the dirt container again as described in «Changing dustbag» (page 12). The central vacuum cleaner is closed and can be started.

## CLEANING FILTER



7. Put the plug back in. With the **profivac IntelligentSystem** the reset button on the device only needs to be pressed for at least five seconds. Your device is now ready for operation.

OR

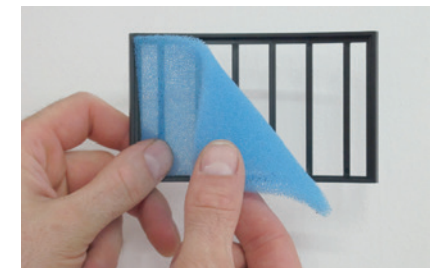
Buy a second filter (99999106). Put this in instead of the dirty filter and simply vacuum the dirty filter until it is clean!

## CLEANING CARBON DUST FILTER

Pull out the mains plug!



1. Push down the grid of the carbon filter.



2. Remove the dirty filter.

3. This filter can be hand washed with cold water. If required, a new carbon brush filter can be bought with article-no. 170407. Please reinstate the carbon brush filter as soon as it has completely dried.

**4. Please do not forget to plug it in again at the mains plug!**



## CHANGING BATTERY

If all LEDs on the handle are flashing, the batteries must be changed.

Loosen the battery cover on the front part of the display with a Phillips screwdriver. Take out the old batteries and insert new ones (minus polarity of the battery in the direction of the spring).



## Hose-protection holder - profivac's ingenious invention

The hose protection can now be fastened to the hose-protection holder.



## Hose Logistics System (HLS)



Vacuuming with the Hose Logistics System without a handle is prohibited!



So always put the handle on and only vacuum then, as otherwise the safety curve is missing!

## GUARANTEE

### 5-year guarantee

You get a 5-year guarantee with the **profivac** central vacuum cleaner.

The issue date of the invoice counts as the start of the guarantee period.

During the guarantee period, faulty central vacuum cleaners can be sent back. In addition, we need you to send the purchase receipt and the filled-out guarantee registration card. You will then get your repaired device back.

The guarantee service only covers material and manufacturing faults. The following are excluded:

- Natural wear
- Damage due to impacts
- Effects of moisture
- Faulty operation
- External influences
- Improper handling by third parties




Once the guarantee period expires, repairs carried out that do not come under the guarantee will be charged for.

We are also available by telephone to answer your questions. You can find the service number on your central vacuum cleaner's manufacturing plate.

You have a 2-year guarantee on all **profivac** accessories.

## PROBLEM / REMEDY

Please pull out the plug before performing cleaning or maintenance work on your profi-vac-central vacuum cleaner!

Problem	Possible cause	Remedy
<b>Weak suction power</b>	Dirt container full	Empty dirt container
	Filter clogged	Clean filter
	Hose blocked up 	Loosen up blocked location by pressing lightly, switch central vacuum cleaner on briefly, the dirt will be vacuumed. Repeat several times if necessary.
	Vacuum line blocked up 	Switch on device with the hose, keep pipe closed for 20 seconds with your hand. The device goes into negative pressure. Take your hand away. If suction power is still weak, repeat. Clear vacuum line with pipe-cleaner with corkscrew head. Inform customer service if necessary.
	Seal between dirt container and housing not tight	Clean and test seal on the housing, check sealing bead on the dirt container and clean, attach dirt container again. If seal is faulty, inform customer service.
<b>Central vacuum cleaner doesn't switch on</b>	Electrical plug in socket?	Insert plug.
	Fuse blown?	Change fuse. If same response, inform customer service.
	Battery is too weak 	Change battery on handle.  <b>THE DEVICE CAN BE SWITCH ON MANUALLY USING THE BUTTON ON THE CENTRAL SYSTEM! THIS ALLOWS YOU TO CHECK WHETHER IT IS THE DEVICE OR THE WIRELESS SYSTEM THAT IS FAULTY!</b>

## PROBLEM / REMEDY

Problem	Possible cause	Remedy
<b>Filter/dirt container display does not go off</b>	Reset button was not pressed	Press the Reset button for at least 5 seconds
	Maintenance display (key) lights up, technical fault on the device	Carbon brushes are worn. Please inform customer service!
<b>Safety switch-off</b>	If all suction nozzles are closed, the device switches off automatically after 30 seconds.	
<b>Forgetfulness switch-off</b>	After an hour of vacuuming the device switches off automatically.	

### TEST LOG:

PRODUCT CERTIFICATION:

electrosuisse»

## GUARANTEE REGISTRATION CARD

---

Surname / Forename

Street

Postcode / Town

Telephone

Email

Serial number

Purchase date

Model

Dealer stamp

Please fill in, copy and fax to:  
(0041) 041 833 88 98 or  
email to: [info@zentralstaubsauger.ch](mailto:info@zentralstaubsauger.ch)

[www.zentralstaubsauger.ch](http://www.zentralstaubsauger.ch)



# späni

Zentrale Haustechnik AG  
Bahnhofstrasse 32  
6422 Steinen

Tel: 041 833 88 99  
[info@zentralstaubsauger.ch](mailto:info@zentralstaubsauger.ch)